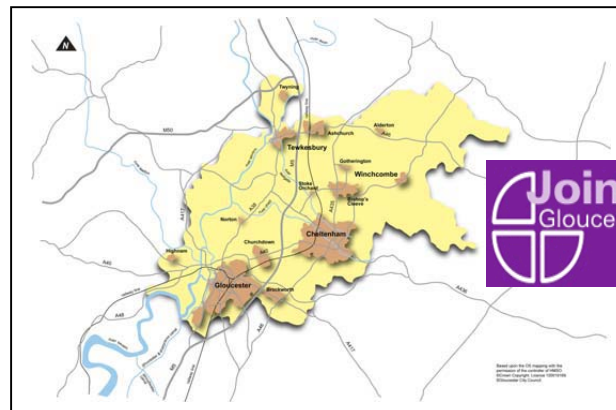


Welcome to the November 09 edition of the Gloucester Partnership Update providing the latest information on what's happening in the Partnership, partner news, knowledge and training.

## Contents:

Partner News	P1 & 2
Executive and Thematic Group Updates	P3
Dates for your diary	P4
Training	P4
Knowledge & Contact Details	P5

## Have your Say About the Future of Your Area



**During November and December local residents are being asked to comment on the future of their area.** The Joint Core Strategy is a partnership between Gloucester City Council, Cheltenham Borough Council, Tewkesbury Borough Council and Gloucestershire County Council. The JCS was formed to produce a coordinated strategic development for the area and will plan how the area will develop during the period up to 2026. The JCS will set out the approach that the Councils will take to protect and enhance the natural and historic environment, deal with climate change, and set out policies for the location and timing of new housing and employment development, regeneration initiative, key infrastructure, community, leisure and tourism facilities.

The "Issues and Questions" consultation document will be published in mid-November to raise awareness of the key issues that the JCS area faces and generate debate about how they could be addressed. This is the first stage in the process, with more detailed options being worked up, and consulted on at a later date. Preparing the JCS means making choices about how the area will develop in the future and it is therefore important that local communities have input.

**HOW TO GET INVOLVED** - Copies of the consultation document will be available to view on the dedicated JCS website ([www.gct-jcs.org](http://www.gct-jcs.org)) and at various locations across the JCS area including all local libraries and Council offices. As part of the consultation there will be various exhibitions and events taking place right across the JCS area. It is your opportunity to meet the JCS team face-to-face, to discuss and tell them what you think. A schedule of exhibitions and events is available on the website, as well as a comprehensive list of locations where the full document can be viewed. Alternatively, contact the JCS team to find out where your local event will be held. Once the consultation has commenced, comments can be made at any of the exhibitions, through the website ([www.gct-jcs.org](http://www.gct-jcs.org)) or by writing to the postal/email address below.

## FURTHER INFORMATION

Tel: 0800 073 1441 Email [info@gct-jcs.org](mailto:info@gct-jcs.org) Website [www.gct-jcs.org](http://www.gct-jcs.org)

Joint Core Strategy Team, Municipal Offices, The Promenade,  
Cheltenham, Glos GL50 9AS

# Get Active and Stay Healthy this Winter

## Gloucester City Council's Physical Activity Directory is now LIVE!

An audit has taken place of all the physical activity opportunities in Gloucester and the information compiled on a database. You can now view opportunities near you by visiting:

[www.gloucester.gov.uk/Freetime/SportsDevelopment](http://www.gloucester.gov.uk/Freetime/SportsDevelopment) and clicking on the link for City Physical Activity Directory.



## Green Gym

**Do you want to participate in an activity away from the norm of the gym?** In partnership with the BTCV, the 'Green Gym' initiative in Gloucester has now been launched.

There are sites in four areas of Gloucester - **Barnwood, White City allotments, Matson and Tuffley**. A BTCV officer is present to develop a programme of practical conservation activities in local areas. Not only is it a great way to improve your health by taking part, but it's all done in the great outdoors within a friendly group. For more information call Caroline Henley on 01452 396707 or email [caroline.henley@gloucester.co.uk](mailto:caroline.henley@gloucester.co.uk).



Gloucester City Council

### Fresh Start Activity Classes

Perfect for those wanting to begin to increase their Physical Activity levels and improve their overall health!

- Tai Chi Fit – Mondays at 9.30am  
Coney Hill Community College
- Fitness Pilates – Mondays at 5.30pm  
Parry Hall, Tredworth
- Multi-Fitness Class – Tuesdays at 1pm  
St. George's Centre, Grange Rd, Tuffley
- 50+ Multi-Fitness Class – Wednesdays at 12pm  
All Nations, Chase Lane (Eastern Ave)
- Multi-Fitness Class – Wednesdays at 2pm  
The Redwell Centre, Matson

£8 for 6 weeks or £15 for 12 weeks. Pre-booking is essential so please contact: CHDe Joslin 01452 396861 or Caroline Henley 01452 396707

UNIVERSITY OF GLoucester  
Gloucester City Council  
Gloucester City Council  
Gloucester City Council

## Fresh Start

Fresh Start Health and Activity Programme is now running a number of classes aimed at people with poor health or who are just starting to increase their activity levels. There are 5 classes

- Mondays at 9.30am - Coney Hill Community College (Tai Chi Fit)
- Mondays at 5.30pm - Parry Hall, Tredworth (Fitness Pilates)
- Tuesdays at 1pm - St. George's Centre, Grange Road, Tuffley (Multi-Fitness Class)
- Wednesdays at 12pm - All Nations, Chase Lane (Eastern Avenue) (50+ Multi-Fitness Class)
- Wednesdays at 2pm - The Redwell Centre, Matson (Multi-Fitness Class)

Places are limited and pre-booking is essential. Reserve your place by calling 01452 396861 or 01452 396707. 12-weeks @ £15 or 6-weeks at £8. Payable by card or cheque.

## EXECUTIVE AND THEMATIC GROUP UPDATES

### Executive

At the September Executive Board meeting Executive members got the chance to learn more about the active Thematic Groups. Representatives from the Healthy City Partnership (HCP), Children and Young Peoples Action Group (CYPAG) and the Crime and Disorder Reduction Partnership (CDRP) provided information about the exciting work they do as a group and also had the opportunity to network with other PAGs.

The Showcase gave members a first hand glimpse at what individual PAGs are doing and provided an opportunity to identify any duplications or gaps in the Action Plans.

Later on in the meeting it was agreed that a small sub group of the Executive would be formed to look at some of the issues that were raised at the July Executive Facilitation. To view the minutes of this meeting please visit the Gloucester Partnership website

[http://www.gloucesterpartnership.org.uk/Executive/Executive\\_Minutes.aspx](http://www.gloucesterpartnership.org.uk/Executive/Executive_Minutes.aspx)

### Stronger Communities Group

The first meeting of the new-look Stronger Communities Priority Action Group will take place on the **16<sup>th</sup> November 12pm-2pm in the Civic Suite**. The draft terms of reference were agreed by the Executive Board in September and the go ahead given for a new group to take on the Sustainable Community Strategy's outcomes around Community Cohesion, Narrowing the Gap and much much more. The group will be initially focusing on the five most deprived neighbourhoods and will oversee the Partnership's equalities requirements.

For more information on any of the above and to be included on the mailing list for the Stronger Communities Group please contact

**Lorna Robinson on 01452 396983 or email [lorna.robinson@gloucester.gov.uk](mailto:lorna.robinson@gloucester.gov.uk)**

### Gloucester City Health Walks

#### Put Your Best Foot Forward...

Aiming to make walking sociable, safe, enjoyable and accessible for Gloucester City residents. By doing this it is hoped that individuals will be able to improve their health and general well-being and start leading more active lifestyles. Walking is a great way to do this and what's more...

- anyone can do it
- it's free
- you don't need any specialist equipment
- the duration and intensity can alter as your fitness levels improve.

For further information visit <http://www.bestfootforwardglos.co.uk/>



## FORTHCOMING MEETINGS AND EVENTS

Please visit the Gloucester Partnership website [http://www.gloucesterpartnership.org.uk/Conference\\_and\\_Events.aspx](http://www.gloucesterpartnership.org.uk/Conference_and_Events.aspx) for a list of meetings and events for 2009/10. If you would like more information on a meeting or event please contact Mary Little, contact details below (unless contact details are given).

### Training

The Centre for Local Economic Strategies (CLES) have produced an extended training programme for the period to December 2009.



Courses include:

- [Understanding how money circulates in your economy: Learn to use the Local Multiplier 3 \(LM3\)](#)
- [Future economic lives: How can economic development respond to the challenge of a low carbon future?](#)
- [Overcoming the challenges of evaluation: An advanced course on evaluation approaches and techniques](#)

In addition further dates are available for courses in:

- [Evaluating projects and programmes](#)
- [Strategy building](#)
- [Local economic development](#)
- [Making the most of the economic assessment duty](#)
- [Understanding and interpreting public policy](#)
- [Project management](#)

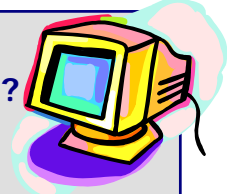
If you are interested in attending a course that would benefit you and the Partnership, please contact Mary Little, 01452 396976, [mary.little@gloucester.gov.uk](mailto:mary.little@gloucester.gov.uk) For further information visit [http://www.cles.org.uk/events/100246/100682/events\\_calendar/](http://www.cles.org.uk/events/100246/100682/events_calendar/)

### Gloucester Partnership has a new look website



Visit the new look website at [www.gloucesterpartnership.org.uk](http://www.gloucesterpartnership.org.uk) to view the latest news, events, agendas, minutes etc.

### Don't have internet access?



If you don't have access to the internet then please contact us and we will be able to send you hard copies of any further information you require. Contact: Mary Little, 01452 396976



The Gloucester Partnership is part of the Gloucestershire Conference. For further information please

<http://www.gloucestershire.gov.uk/index.cfm?articleid=3987>

## Knowledge

“Keeping you informed of the latest developments in partnership working and creating sustainable communities”

The September edition of the Local Government Association Analysis and Research Bulletin is now available:

Please visit [http://www.gloucesterpartnership.org.uk/Updates\\_and\\_Bulletins.aspx](http://www.gloucesterpartnership.org.uk/Updates_and_Bulletins.aspx) for further details.

The Bulletin includes links to:

### Homes for our old age

This CABE report highlights issues and concerns for housing planners, commissioners and designers as the ageing population increases.

### Recession and recovery: how UK cities can respond and drive the recovery

With a focus on 12 UK cities this report from The Work Foundation considers why some cities are suffering more than others and highlights what could change their future prospects.

### Who is heading for higher education?

This report from the Department for Business, Innovation and Skills (BIS) explores the attitudes and intentions among young people in England towards higher education .

## CLES BRIEFINGS

The Centre for Local Economic Strategies (CLES) have recently produced the following publication:

- **Liberal Democrat Party policy on economic development and regeneration**

To download the full document together with previous bulletins visit the Gloucester Partnership website:

[http://www.gloucesterpartnership.org.uk/Updates\\_and\\_Bulletins.aspx](http://www.gloucesterpartnership.org.uk/Updates_and_Bulletins.aspx)

---

---

### Contact Us!

We would like to hear about any news or events from your organisation that we can include in the next edition of Gloucester Partnership Update. Please contact Mary using the details below by Friday 18<sup>th</sup> December 2009. We are also keen to hear any comments you have about this newsletter:

**Mary Little, Gloucester Partnership Administrative Officer**

**A: Gloucester City Council, Herbert Warehouse, The Docks, Gloucester, GL1 2EQ**

**T: 01452 396976**

**E: [mary.little@gloucester.gov.uk](mailto:mary.little@gloucester.gov.uk)**

**W: [www.gloucesterpartnership.org.uk/](http://www.gloucesterpartnership.org.uk/)**