

Welcome to the September 09 edition of the Gloucester Partnership Update providing the latest information on what's happening in the Partnership, partner news, knowledge and training.

Contents:

Partner News	P1
Executive and Thematic Group Updates	P2
Dates for your diary	P3
Training and news	P3
Knowledge & Contact Details	P4

Gloucestershire County Council announce major investment in early years care



Aimed at providing quality childcare that helps parents either get back into work or training or remain in employment.

The money will either be used to build new accommodation and create extra places, improve facilities and make them accessible for everyone, provide new IT equipment or provide outdoor and play equipment.

Most of the schemes have been identified but money has been set-aside for others that will be confirmed later.

All projects will be completed by December 2011. The projects chosen have been prioritised using Government criteria and knowledge of the current childcare market and further information can be found by visiting <http://www.gloucestershire.gov.uk/index.cfm?articleid=93592>

Autumn/Winter StreetGames programme now available.



Providing low cost and some free sports sessions - happening across Gloucester from week commencing 14th September - week ending 11th December 2009.

Sessions are run by qualified, CRB checked sports coaches. All equipment for activities is provided. Please advise young people to bring a drink with them!

If you would like flyers posted to you please send email to sports.development@gloucester.gov.uk with your postal address and quantity required or for an electronic copy visit

www.gloucesterpartnership.org.uk

Community Development

The aim of the Community Development Service is to actively increase the social inclusion of all communities and individuals in Gloucester, so that they can shape a better future for themselves.

Main activities are:

- Providing grant aid to voluntary and community organisations including monitoring and evaluating the impact of grant-aid.
- Providing support, advice and assistance to voluntary and community organisations, including new and developing groups.
- Developing Council policies and strategies in relation to the voluntary sector
- Identifying and working to meet key capacity-building and infrastructure needs within the voluntary and community sector
- Supporting multi-agency partnerships based on community development principles.

They provide:

- Grant aid to voluntary and community organisations.
- Information and advice, including external funding.
- Guidance, support and sign-posting
- Strategy and policy development work.

To view a list of voluntary and community groups awarded a grant in 2009-10 see link below:

<http://www.gloucester.gov.uk/Community/Grants/GrantAwards2009/CommunityGrants2009-10.aspx>

EXECUTIVE AND THEMATIC GROUP UPDATES

Executive

Following the facilitated Executive meeting on the 24th July there has been a number of positive outcomes and recommendations that the LSP are moving forward with.

Firstly the partnership decided upon its priorities for the next 12 months, the four primary priorities were:

1. The recession and worklessness
2. Deprivation and narrowing the gap
3. Young people and the gaps in provision
4. Community Cohesion

Secondly it was agreed that there was not enough support for new Executive and PAG members so the LSP Officer is now working on a handbook that will help all newcomers understand the LSP and their role within it. This should be available in October but in the meantime Lorna, the LSP Officer is available at lorna.robinson@gloucester.gov.uk or ext 6983 if any partnership member needs some additional support or information.

Another significant finding from the facilitation was that there needs to be a more stringent performance and risk management framework put into place so that the partnership can show distance travelled in a more straight forward manner. A task and finish group will be set up to look at best practise and ways of moving the current system forward. Any Exec or PAG member who is interested in being part of this group should contact Lorna Robinson on the above email address.

These are just three of the findings from that session, if you would like to see all of the recommendations made to the board following that session please visit the Gloucester Partnership website <http://www.gloucesterpartnership.org.uk/Minutes.asp?menu=2>

Children & Young People Action Group



**Gloucester Play Rangers
have busiest summer ever!**



Play Gloucestershire's Play Rangers have provided 48 free play days recording 1,063 play visits to 8 Gloucester communities lucky enough to host Play Rangers during the school summer holidays.

The Play Ranger scheme is funded by Gloucester City Council under the Big Lottery Fund Children's Play Programme. Play Gloucestershire, a registered charity, are contracted to provide free, fun outdoor play to children living in Gloucester's priority areas of Barton, Coney Hill, Kingsholm, Linden, Matson, Podsmead, Tredworth and Tuffley.

Pip Levett, Director of Play for charity Play Gloucestershire said 'active outdoor play is the perfect way for children to get their recommended dose of 60 minutes physical activity each day. Our Play Rangers love providing a varied and exciting menu of activities including den building, fires, sports, arty things, and water slides! We help low income families to enjoy play together, and they are always telling us how brilliant it is to be able to take part in free, fun outdoor activities that are delivered on their doorstep.'

During this summer Play Gloucestershire have worked in a highly successful partnership with Gloucester City Council's [Streetgames](#) team. Parents have also been actively volunteering at sessions, and children of migrant workers from European countries have also been using Play Rangers to meet and make friends.

Gloucester Play Rangers will continue working throughout the year outdoors and in the dark! The Big Lottery Funded scheme ends in September 2010. "We know that our Play Rangers have become an important part of community life in Gloucester. We are always looking to work with new stakeholders, and are desperate to keep this scheme going after our lottery money runs out. Please contact us if you would like to work with us in a mutually supportive way" said Ben Morris, Gloucester Play Ranger Team Leader.

www.playgloucestershire.org.uk Tel Ben Morris 07896 280235 Email ben@playgloucestershire.org.uk

FORTHCOMING MEETINGS AND EVENTS

Please visit the Gloucester Partnership website <http://www.gloucesterpartnership.org.uk/confAndEvents.asp> for a list of meetings and events for 2009/10. If you would like more information on a meeting or event please contact Mary Little, contact details below (unless contact details are given).

Training

The Centre for Local Economic Strategies (CLES) have just produced an extended training programme for the period to December 2009.



New courses include:

- [Understanding how money circulates in your economy: Learn to use the Local Multiplier 3 \(LM3\)](#)
- [Learning from recession: Forging greater economic resilience in the future](#)
- [Future economic lives: How can economic development respond to the challenge of a low carbon future?](#)
- [Overcoming the challenges of evaluation: An advanced course on evaluation approaches and techniques](#)

In addition further dates are available for courses in:

- [Evaluating projects and programmes](#)
- [Strategy building](#)
- [Local economic development](#)
- [Making the most of the economic assessment duty](#)
- [Understanding and interpreting public policy](#)
- [Project management](#)

If you are interested in attending a course that would benefit you and the Partnership, please contact Mary Little, 01452 396976, mary.little@gloucester.gov.uk For further information click [here](#)

Gloucester City Health Walks

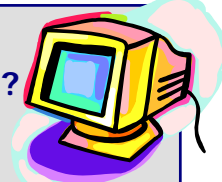
Put Your Best Foot Forward...

Aiming to make walking sociable, safe, enjoyable and accessible for Gloucester City residents. By doing this it is hoped that individuals will be able to improve their health and general well-being and start leading more active lifestyles. Walking is a great way to do this and what's more...

- anyone can do it
- it's free
- you don't need any specialist equipment
- the duration and intensity can alter as your fitness levels improve.

For details of September walks click [here](#)

Don't have internet access?



If you don't have access to the internet then please contact us and we will be able to send you hard copies of any further information you require. Contact: Mary Little, 01452 396976



The Gloucester Partnership is part of the Gloucestershire Conference. For further information please visit

<http://www.gloucestershire.gov.uk/index.cfm?articleid=3987>

Knowledge

“Keeping you informed of the latest developments in partnership working and creating sustainable communities”

The July edition of the Local Government Association Analysis and Research Bulletin is now available: Please visit www.gloucesterpartnership.org.uk for further details.

The Bulletin includes links to:

- **The growth of claimant unemployment to vacancy ratio by area**
LGA Analysis and Research have examined how the number of unfilled vacancies has changed over the past year at local authority district level.
- **Global slowdown: local solutions II, councils helping people and businesses**
This LGA publication contains a collection of case studies which show that councils are key players in developing an innovative and effective response to the current economic climate, and that they are already preparing people and businesses to be best placed when the recovery starts.
- **Understanding the risks of social exclusion across the life course: youth and young adulthood**
The Cabinet Office Social Exclusion Task Force commissioned four studies to provide evidence to better understand social exclusion at different stages of the life course. The research covers 16-24 year olds.
- **The equality implications of being a migrant in Britain**
This EHRC report considers the inequalities that migrant workers and their families face in Britain today. It analyses recent statistical data from a range of official sources, and examines the experiences of migrants themselves.
- **People, perceptions and place**
This Ipsos MORI report is designed to help local public services and partnerships better understand what factors affect key outcomes such as satisfaction with quality of life, community cohesion, feelings of influence and ratings of local services.
- **Europeans' attitudes to climate change**
This report from the European Commission presents the results of a survey on Europeans' attitudes towards climate change. It explores citizens' perceptions of climate change in relation to other world problems, perceptions of the seriousness of climate change and attitudes towards alternative fuels and CO² emissions.

CLES BRIEFINGS

The Centre for Local Economic Strategies (CLES) have recently produced the following publications:

- **The potential of Community Land Trusts in forging resilient communities**
- **Understanding public sector investment in a place and its impact upon communities**
- **Market Towns: How are they responding to the recession, and what future support is required?**

Go to the Gloucester Partnership website to download the full document:
www.gloucesterpartnership.org.uk/Cles.asp

Contact Us!

We would like to hear about any news or events from your organisation that we can include in the next edition of Gloucester Partnership Update. Please contact Mary using the details below by Friday 23rd October 2009. We are also keen to hear any comments you have about this newsletter:

Mary Little, Gloucester Partnership Administrative Officer

A: Gloucester City Council, Herbert Warehouse, The Docks, Gloucester, GL1 2EQ

T: 01452 396976

E: mary.little@gloucester.gov.uk

W: www.gloucesterpartnership.org.uk/